



A Joint Committee of the Pennsylvania General Assembly

2019 Annual Report

January 2020



Legislative Budget and Finance Committee

A JOINT COMMITTEE OF THE PENNSYLVANIA GENERAL ASSEMBLY

Offices: Room 400 Finance Building, 613 North Street, Harrisburg
Mailing Address: P.O. Box 8737, Harrisburg, PA 17105-8737
Tel: (717) 783-1600 • Fax: (717) 787-5487 • Web: <http://lbfc.legis.state.pa.us>

**LEGISLATIVE
BUDGET & FINANCE
COMMITTEE**

EST. 1959

OFFICERS

Chairman
SENATOR
ROBERT B. MENSCH

Vice Chairman
SENATOR
JAMES R. BREWSTER

Secretary
REPRESENTATIVE
STEPHEN E. BARRAR

Treasurer
REPRESENTATIVE
JAKE WHEATLEY

SENATORS

MICHELE BROOKS
ARTHUR HAYWOOD
KRISTIN PHILLIPS-HILL
CHRISTINE TARTAGLIONE

REPRESENTATIVES

AARON BERNSTINE
SCOTT CONKLIN
MARGO DAVIDSON
CRIS DUSH

EXECUTIVE DIRECTOR

PATRICIA A. BERGER

**DEPUTY EXECUTIVE
DIRECTOR**

CHRISTOPHER LATTA

January 2020

To: All Members of the Pennsylvania General Assembly

This Annual Report of the Legislative Budget and Finance Committee includes a summary of the five reports and performance audits completed by the Committee in the 2019 calendar year and a list of the current projects before the Committee. The report contains a list of all reports, categorized by subject matter, which the Committee has completed since 1981. The report also describes the duties and responsibilities of the Committee and provides information about the Committee's staff and operations.

The Committee welcomes questions and comments regarding its activities and this report.

Respectfully submitted,

Bob Mensch

Chairman

TABLE OF CONTENTS



I. BACKGROUND	1
Statutory Composition.....	1
II. ROLES AND RESOURCES	2
Committee Members	2
Staff Resources	5
Report Development	9
Statutory Charges	10
III. REPORTS	12
Summaries of LBFC Reports Completed in 2019	12
A Performance Audit of the Pennsylvania Fish and Boat Commission	12
The Impact of Tavern Gaming on the Pennsylvania State Lottery	14
A Performance Evaluation of the Department of Environmental Protection Chapter 102 & Chapter 105 Permitting Programs	15
A Report on Standardized Tests in Public School	17
A Study of Pennsylvania's Dairy Industry	18
IV. 2019 PROJECTS READY FOR RELEASE, IN PROCESS, OR ASSIGNED	20
V. REPORTS COMPLETED SINCE 1981 (SUNSET & NON-SUNSET)	21

SECTION I BACKGROUND



Statutory Composition

The Legislative Budget and Finance Committee (LBFC) is a bipartisan, bicameral legislative service agency created by Act 1959-195, as amended, 46 P.S. §§70.1-70.6. The Committee has authority to perform “all duties and functions relating to the study of the revenues, expenditures and fiscal problems of the Commonwealth, its officers, boards, Committees, commissions, institutions and other State agencies.” The LBFC conducts studies and makes recommendations for the Pennsylvania General Assembly aimed at:

- The elimination of unnecessary expenditures.
- The preservation of economy in the government of the Commonwealth.
- The determination that state funds are being expended in accordance with legislative intent and law.
- Comparison of revenues and expenditures.

To carry out this mandate, the LBFC is authorized to conduct a wide range of research activities pertaining to the operation and performance of state government programs. The Committee is also charged to report its findings and recommendations “from time to time, to the members of the Legislature and . . . the standing Committees of the Senate and House of Representatives . . . ,” and the Governor and Auditor General. The LBFC’s enabling legislation specifies that agencies which are the subject of Committee examination be afforded an opportunity to comment on the LBFC’s report prior to its publication. If provided, such comments become part of the final report.

The primary purpose of the LBFC, therefore, is to assess the appropriateness (e.g., compliance with objectives and mandates of the General Assembly), efficiency, and effectiveness of state government programs and agencies.

Mission Statement:

To provide members of the Pennsylvania General Assembly timely, accurate, and unbiased information, analysis, and performance evaluation to inform their policy decisions.

SECTION II ROLES AND RESOURCES



Committee Members

The LBFC consists of 12 members of the General Assembly—6 Senators and 6 Representatives. By law, the Committee is comprised equally of members from the majority and minority parties in each chamber of the General Assembly. The President Pro Tempore of the Senate, the Speaker of the House of Representatives and the Majority and Minority Leaders of each chamber are designated by law as members of the Committee. The President Pro Tempore of the Senate and the Speaker of the House of Representatives appoint three additional members of their respective chambers, at least two of whom are to be from the Minority party. The President Pro Tempore, the Speaker of the House of Representatives, and the Majority and Minority Leaders in both chambers may designate other members of their respective Chambers to serve as their designees on the Committee.

The Committee elects its own Chair, Vice Chair, Secretary, and Treasurer.

Committee Officers



Chair
Senator Robert Mensch



Vice-Chair
Senator James Brewster



Secretary
Representative Stephen Barrar



Treasurer
Representative Jake Wheatley

Senate Committee Members



Michele Brooks



Kristin Phillips-Hill



Christine Tartaglione



John Yudichak



Arthur Haywood

House Committee Members



Chris Dush



Aaron Bernstine



Scott Conklin



Margo Davidson

Changes in Committee Membership in 2019

- A special thanks to Representative Stephen Barrar, who has served with The Legislative Budget and Finance Committee since the 2007-08 session and became an officer in 2019.
- Senator John Yudichak (D) changed his party affiliation to Independent, and therefore, his appointment to the Committee was discharged as of November 19, 2019.
- LBFC welcomed Senator Arthur Haywood (D) on December 12, 2019, to the Committee.

Staff Resources

Qualifications

At the end of 2019, the Legislative Budget and Finance Committee had a staff complement of thirteen. The staff includes individuals with the following degrees:

- Master of Business Administration, major in business.
- Three Masters of Public Administration, with majors in public administration, public budgeting and financial management, and public and non-profit management.
- Master of Public Health, major in community and behavioral health.
- Three Licensed Attorneys.
- Bachelor of Science, major in criminal justice.
- Three Bachelor of Arts, majors in policy and management studies, and political science.

2019 Staff Listing

<u>Name</u>	<u>Position</u>
Joseph Asare*	Analyst I
Patricia Berger	Executive Director
Lauren Bordner	Office Resource Manager
Jason Brehouse	Project Manager
Stephen Fickes	Project Manager
Amy Hockenberry	Analyst II
Tomeka Jenrette	Receptionist
Rick Jones	Counsel
Christopher Latta	Deputy Executive Director/Project Manager
Rebanta Mukherjee*	Analyst I
Shanika Mitchell-Saint Jean	Analyst II
Stevi Sprenkle	Analyst II
Anne Witkonis	Analyst II

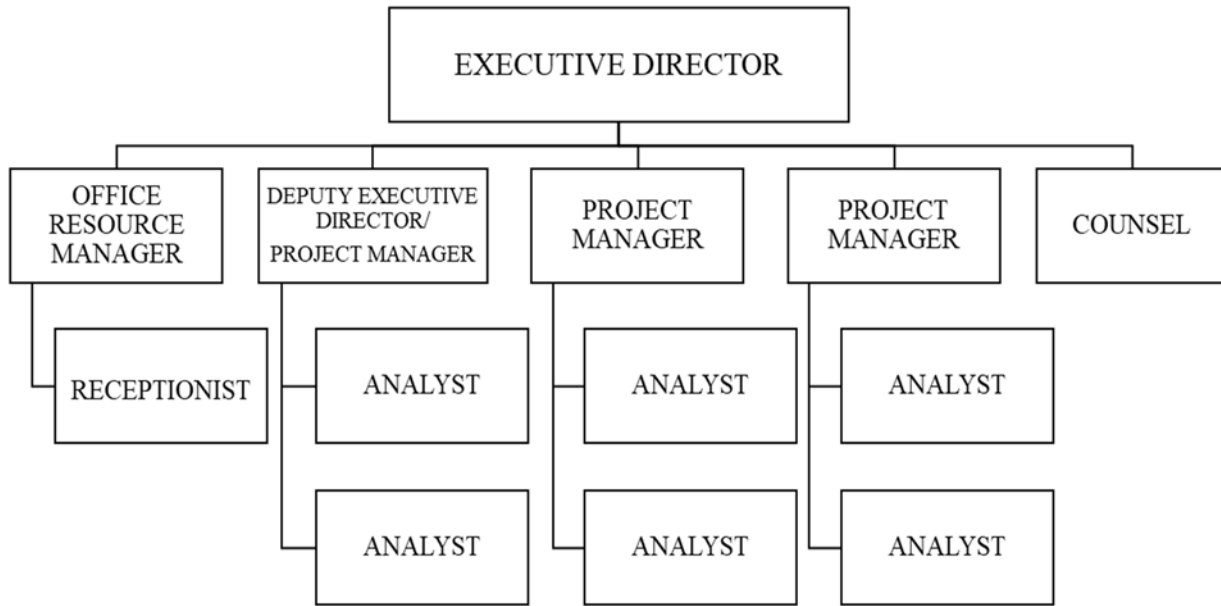
**Joined the staff in 2019.*

The following individuals left LBFC in 2019:

- Anna Amsbaugh resigned effective July 26, 2019.

The LBFC's office and staff are located in the Finance Building within the Harrisburg Capitol Complex. LBFC's organizational structure is shown on the following page.

Legislative Budget and Finance Committee Organization Chart



Expenditures

During fiscal year 2018-19, the Committee spent \$1,747,206.92.

LBFC News

Links to one-page summaries of released reports as well as the full reports can be found on the LBFC website (<http://lbfc.legis.state.pa.us>). The website also lists current LBFC members and staff as well as recent information on Committee and staff activities, including links to videos of Committee meetings.

- LBFC turned 60! The Legislative Budget and Finance Committee was established August 4, 1959. On October 21, 2019, the LBFC held a drop-in event in the East Wing of the Capitol to celebrate the LBFC's anniversary. Visitors enjoyed cake and snacks as they viewed historical examples of the Committee's reports from each decade and read through a timeline of events in and around the sixty years of LBFC's operations. As a part of the celebration, the office collected non-perishable food items to donate to the Central PA Food Bank.

LBFC 60th Anniversary



- LBFC seeks to improve and increase media coverage of our reports. Stephen Fickes, Project Manager, was interviewed by Fox43's Jamie Bittner regarding the Committee's recent report on the dairy industry.



- Patricia Berger, Executive Director, and Shanika Mitchell Saint-Jean, Analyst, attended the 2019 NLPES Conference in Park City, Utah. Patricia serves as the secretary on the NLPES Executive Committee. Shanika summarized key information from workshops she attended and shared it with LBFC staff.
- LBFC held a two-day in-house training October 28-29, 2019, provided by The United States Government Accountability Office – Center for Audit Excellence (GAO) for all

staff responsible for audit and study work. The continuing professional education training course was on Performance Auditing.



- LBFC has been awarded an NLPES Impact Award in 2016, 2017, 2018, and 2019.



Report Development

Overview of Key Steps in the LBFC Performance Audit Process					
Audit Adoption	Administrative & Planning	Preliminary Survey	Fieldwork	Report Referencing & Internal Quality Review	Report Production, Release, & Post-release
<ul style="list-style-type: none"> • Audit or study project is initiated by statute, resolution, or proposal by LBFC member or other member of the General Assembly, i.e., a discretionary project. • Audit or study project is formally adopted by the LBFC officers and/or the full Committee. • Audit or study is assigned to LBFC staff and is incorporated into staff project schedule. 	<ul style="list-style-type: none"> • Develop audit scope and objectives. • Develop preliminary survey work plans. • Develop preliminary audit survey questionnaire. 	<ul style="list-style-type: none"> • Send engagement letter to agency. • Send engagement letter to standing Committees with subject matter jurisdiction. • Meet with prime sponsor of resolution or discretionary project. • Establish agency reference file. • Conduct entrance conference. • Develop preliminary survey work plan (if required). • Conduct initial interviews with agency staff, stakeholders, etc. • Obtain audit or study perspectives (agency and others). • Assess availability of data. • Develop non-findings sections. • Conduct mission analysis (not necessary for a project with defined objectives). 	<ul style="list-style-type: none"> • Audit or study objective refined, if necessary, and fieldwork plans developed. • Focused audit or study activities conducted at central office and field locations. • Data collection, analysis, and verification is carried out in all finding areas. • Develop summary work papers. • Develop draft findings. 	<ul style="list-style-type: none"> • Final referenced copy of draft report prepared and reviewed by audit team. • Draft report reviewed by Executive Director and/or a project manager not previously involved in the audit for internal quality control review. • Audit team makes necessary report adjustments. • Conduct exit conference with agency, if requested. 	<ul style="list-style-type: none"> • Confidential draft report sent to agency for their review. • Agency response received and final report printed. • Prepare oral presentation and press release. • Committee meeting held. Discuss, release, and distribute report. • Audit files archived.

Statutory Charges

Under Act 1959-195, as amended by Act 1961-645, the Legislative Budget and Finance Committee (LBFC) is empowered “to perform all duties and functions relating to the study of the revenues, expenditures, and fiscal problems of the Commonwealth, its officers, boards, Committees, commissions, institutions and other State agencies.” This includes, among others, the power to review Commonwealth revenues and expenditures to identify unnecessary expenditures, to promote economy in state government, and to ensure that state funds are expended as intended by law. If funds are found to be used for purposes unintended by law or if it is found that any other statutory restrictions or provisions are being violated, the LBFC is to report to the General Assembly, the Governor, and the Auditor General.

Otherwise, the Committee is charged to report “from time to time, to the members of the Legislature and . . . the standing Committees of the Senate and House of Representatives with respect to any of its findings or recommendations”

In addition to the general authority under its enabling statute, the LBFC has been granted authority under the following legislative actions:

Act 2019-20 - Fiscal Code (SB147), Allows for Sunday hunting, and within 180 days (Governor signed November 27, 2019) of the effective date of this subsection, the LBFC shall prepare a financial analysis of fees, fines, penalties, royalties, Federal and State appropriations and other sources of revenue received by the Game Commission and of expenditures.

Act 2018-90, requires the LBFC to study and evaluate the funding of certified organ procurement organizations operating in the Commonwealth. The report is due October 2020.

Act 2017-55 (House Bill 178), requires the LBFC to study the effectiveness of the provisions of subsections (a)(5), (c) and (d) and section 1125.1, (regarding the suspension of professional employees) including whether these provisions of law are being used effectively by school districts to improve school district efficiency and the impact of these provisions on programs offered to students, as well as the impact on programs that would have been offered to students if these

provisions had not been enacted, if such information is available. The report is due December 2022 to the Governor, the chairperson and minority chairperson of the Education Committee of the Senate and the chairperson and minority chairperson of the Education Committee of the House of Representatives.

Act 2016-86 (House Bill 1606), requires LBFC to review the success of the rural regional college and rural regional college plan established pursuant to this act. The interim report was released June 2018, and the final report is due June 2022.

Act 2016-20 (HB 1329), requires certain hospitals to allow patients an opportunity to designate caregivers in patients' medical records and imposing duties on hospitals; requires the LBFC to conduct a study regarding the impact of the act on certain patient outcomes, including, but not limited to, hospital readmissions. The report is due April 2022.

Act 2013-90, an amendment to the Local Option Small Games of Chance Act, requires the LBFC to conduct an annual study of the impact of tavern gaming on the State Lottery. The next report is due March 2020.

Act 2007-45 and Act 2010-123, requires the LBFC to annually submit a report to the Appropriations and Education Committees of the Senate and the House summarizing the financial and academic status of a third-class distressed school district and including an audit of its accounts for the immediately preceding school year.

Act 2004-159, amended the Fish and Boat Code to implement a new license fee structure and requires the LBFC to conduct a performance audit of the Pennsylvania Fish and Boat Commission every three years. The next report is due July 2022.

Act 1995/1-17, enacted during the First Special Session on Crime, amended the Uniform Firearms Act to require that the

Pennsylvania State Police establish a system for conducting instant background checks on prospective firearms purchasers. The act also established a \$2 instant background check fee and a \$3 surcharge on each firearms sale. The act's provisions require the LBFC to assess the adequacy of the fees charged by the PA State Police for their Instant Records Check System. The next report is due October 2020.

Act 1986-93, 34 Pa.C.S.A. §522(b), as amended by Act 1998-166, requires the LBFC to conduct a performance audit to examine the Pennsylvania Game Commission's (PGC) compliance with its strategic plan every three years. The next report is due February 2021.

SECTION III REPORTS



Summaries of LBFC Reports Completed in 2019

The LBFC is charged with conducting informational and evaluative studies and performance audits as directed by the Committee and as mandated by the General Assembly. Further, the Committee is charged to:

... make reports, from time to time, to the members of the Legislature and, upon request, to the standing Committees of the Senate and House of Representatives with respect to any of its findings and recommendations...

Five reports were completed and released in 2019. Summaries of these reports are located on the following pages. Copies of reports can be obtained by contacting our office via:

Email: lbfcinfo@palbfc.us

Telephone: 717-783-1600 or 717-787-5487 (fax)

Website: <http://lbfc.legis.state.pa.us>

Report Released: March 2019

A Performance Audit of the Pennsylvania Fish and Boat Commission

Background:

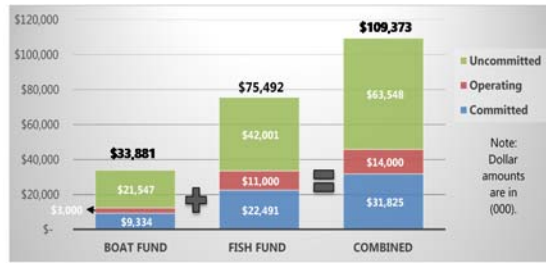
Act 2004-159 directs the Legislative Budget and Finance Committee (LBFC) to conduct a performance audit of the Pennsylvania Fish and Boat Commission (PFBC) on a three-year cycle. These periodic audits began in 2007, and this is the fifth audit completed under Act 2004-159. We reviewed PFBC operations over the past three fiscal years: July 1, 2015, through June 30, 2018.

Summary of Findings:

❖ **Reserve fund balances have been “healthy” over the past three years.**

The PFBC is funded through two special funds: the Fish Fund and the Boat Fund. Although these funds are separate, with each having its own statutorily-defined purposes, collectively, the PFBC held **\$109.4 million** in reserve as of June 30, 2018.

The PFBC has been able to sustain these reserve balances because of a Spending Reallocation Plan (SRP) it instituted in fiscal year (FY) 2014-15. The SRP kept spending in line with revenues, but it did so at the cost of not filling vacant positions and delaying other operating expenditures.



The PFBC needs to maintain reserve balances to ensure it can sustain operations in the advent of an emergency.

- ❖ **The largest revenue source to the Fish Fund and the Boat Fund—licenses and fees—was relatively flat over the past three years.** Licenses and fees accounted for 67 percent of all Fish Fund revenue and 49 percent of all Boat Fund revenue over the period. Revenue from these categories decreased by 1.5 percent to the Fish Fund, and increased by only 1.8 percent to the Boat Fund.
- ❖ **Over the three-year period, Fish Fund total expenditures increased by just 0.3 percent, and Boat Fund total expenditures decreased by 0.3 percent.** Ninety-six percent of Fish Fund expenditures, and 90 percent of Boat Fund expenditures are for personnel and operating expenses. Despite mandated increases for healthcare, retirement, and negotiated salary increases for employees covered by collective bargaining agreements, the PFBC held expenses below available revenues. Overall, agency spending by organizational unit was highest within the Bureau of Hatcheries (28 percent), followed by the Bureau of Law Enforcement (23 percent).
- ❖ **A potentially troubling trend is occurring with resident fishing license sales.** As the primary revenue generator for the Fish Fund, resident fishing license sales are significant to the PFBC. New revenue, primarily through a license fee in-

crease, will be needed soon. Yet, historically, raising fees has led to an initial decline to resident sales after the fee is enacted. Although these declines were later erased by license sales growth over the life of the fee increases, our analysis shows that this “initial drop-then sustained license growth” may not be the case going forward because over the life of the past two license periods, there has been (and continues to be) a negative sales growth for resident license sales. Conversely, nonresident license sales have been steady, and in some categories, have even increased in recent years.

- ❖ **The PFBC operates and maintains a robust system of fish propagation and stocking.** Over the three-year period, nearly 140 million fish (of varying species) were propagated and stocked in Pennsylvania waterways. Hatchery operations are a significant expense to the PFBC but represent a tangible “return on investment” for licensed anglers. Reducing hatchery operations, as a means of controlling costs, seems ill-advised. We also reviewed the PFBC’s Cooperative Nursery Program, which provides various groups and schools with fish to raise and later stock in Pennsylvania waterways and found the PFBC did a good job of ensuring sponsors were inspected and meeting program guidelines.
- ❖ **The SRP has constrained law enforcement complement capacity.** Waterways conservation officers, who are sworn law enforcement officers, complete a number of important duties for the PFBC including public outreach, resource protection, and public safety. As a means of controlling costs, new training classes have been delayed, which has impacted complement levels. Recently, a new class of cadets will start with the

PFBC, which should help to ease this constraint.

❖ **Our report contains 10 recommendations.**

We recommend that the General Assembly grant the PFBC greater autonomy to set its own fees. We further recommend that license fees for nonresidents should be in-

creased before resident license fees are increased. We also include recommendations to improve the monitoring and reporting of the Cooperative Nursery Program. Finally, we encourage the PFBC to recruit potential cadets that have already completed municipal police officer training, while ensuring that these candidates are thoroughly vetted.

Report Released: March 2019

The Impact of Tavern Gaming on the Pennsylvania State Lottery

Background:

Act 2013-90, an amendment to the Local Option Small Games of Chance Act, requires the Legislative Budget and Finance Committee (LBFC) to conduct an annual study of the impact of tavern gaming on the State Lottery. Under the act, the Governor may request the General Assembly appropriate money from the General Fund to the State Lottery Fund up to the amount identified in the study. This is the fourth such report under this mandate.

Summary of Findings:

- ❖ **As of January 2019, the PLCB had approved 64 tavern gaming establishments, 50 of which are active.** This is far below the Governor's Office initial estimates of 2,000 licensees. Expensive up-front license fees, intrusive background checks, and an unfavorable tax structure have been cited as some of the reasons for low participation among tavern owners.
- ❖ **In 2018, tavern games generated \$1.64 million in state and host municipality tax revenue.** This is far below the Governor's Office initial estimates of \$93.6 million annually.
- ❖ **Tavern gaming has not had a material impact on the State Lottery.** The \$1.64 million in tavern gaming revenue collected by the Commonwealth in 2018 represents about \$2.52 million in patron losses as compared to about \$1.56 billion in losses for persons participating in Lottery games, including iLottery play.

Because tavern gaming losses are less than two-tenths of one percent (0.16 percent) of the losses incurred in Lottery games, we concluded tavern gaming did not have a material impact on State Lottery sales in 2018.

Report Released: June 2019

A Performance Evaluation of the Department of Environmental Protection Chapter 102 & Chapter 105 Permitting Programs

Background:

Senate Resolution 2017-226 directs the Legislative Budget and Finance Committee to conduct a performance evaluation of two environmental permitting programs within the Department of Environmental Protection: the Chapter 102 Erosion and Sediment Pollution Control Program and the Chapter 105 Water Obstruction and Encroachment Program.

Summary of Findings:

- ❖ **Stakeholders, both regulated and regulator, expressed a wide variety of concerns about the management of the permit application process.** The two issues raised most frequently were inconsistencies in the interpretation of regulations and requirements of the permitting programs, between and among the regional offices and the CCDs, and the length of time for permit applications to be reviewed and disposed. Stakeholders also report a lack of communication from the DEP Central Office to the DEP regional offices, CCDs, and the regulated community.
 - ❖ **DEP does not systematically collect, compile, analyze, and report data to measure the performance of the CCDs or DEP regional offices for all Chapter 102 and Chapter 105 permitting programs.** LBFC staff conducted a file review of disposed DEP permits to gauge whether the CCDs and DEP are consistently adhering to the review process and internal controls established by DEP. We reviewed roughly 440 files and found that DEP internal controls, designed to ensure compliance with review requirements, are ineffective. For example, DEP requires its employees to complete certain checklists. The majority of those checklists were either incomplete or missing.
 - ❖ **DEP does not document whether its Chapter 102 and Chapter 105 permitting programs are protecting the environment.** One of the stated purposes of both permitting programs is protection of the environment, however, we found that DEP does not have policies and procedures in place for the Chapter 102 program to ensure continued environmental protection after a project is terminated, unless a complaint is filed.
 - ❖ **DEP has not sought an increase in fees to supplement funding for either permitting program.** DEP has traditionally funded the Chapter 102
- Additionally, DEP has no mechanisms in place to collect, compile, analyze, and report data that may be used to measure environmental effects for all types of permits in both programs. Further, DEP does not systematically monitor whether a Chapter 102 Notice of Termination (NOT) has been submitted and approved. The NOT represents a final inspection of the project site to ensure compliance with Commonwealth laws, regulations, and the approved permit application.
- DEP does not systematically inspect a Chapter 105 permitted site post construction to ensure the environment is protected. According to DEP, inspection is a compliance and enforcement responsibility, not a permitting requirement.

and Chapter 105 programs with a combination of state general funds, federal funds, and program fees. We found that DEP has not sought an increase in fees to supplement funding for either permitting program. DEP is mandated, by regulation, to issue fee reports for the Chapter 102 and Chapter 105 permitting programs. The reports may be used to request an increase in fees. DEP failed to issue a Chapter 102 fee report when it was last mandated to do so. DEP issued the Chapter 105 report, but did not propose an increase in fees.

are approved within the guaranteed time frames.

- ❖ **DEP has undertaken three major initiatives to improve the program.** The Permit Decision Guarantee Program (essentially an update of the former Money-Back Guarantee Program) is designed to establish a standardized review process and processing times for permits. We found that DEP and the CCDs have not met PDG timeframe requirements when complete and technically adequate applications have been submitted. The percentage of complete and technically adequate permit applications reviewed and disposed within the maximum review days exceeded 90 percent in only one of five permit types.

The Regional Project Coordination Office (RPCO) is designed to provide “synchronized and consistent reviews and approvals for general to complex projects.” The RCPO has been in place for almost two years and has only recently begun reviewing projects.

DEP has developed an ePermitting system to streamline the process of permit application and approval. The roll-out of this program has been problematic.

- ❖ **Our report contains 16 recommendations.** The recommendations are designed to address conflicting interpretations of application requirements; provide effective administrative control and guidance; ensure protection of the environment; and ensure eligible applications

A Report on Standardized Tests in Public School

Background:

Act 2018-322 (SR 322) directed the Legislative Budget and Finance Committee (LBFC) to conduct a study and provide a report on standardized tests in public schools.

Summary of Findings:

- ❖ **Standardized test defined.** A “standardized test” is “any form of test that requires all test takers to answer the same questions, or selection of questions from a common bank of questions, in the same way, and that is scored in a standard or consistent manner, which makes it possible to compare the relative performance of individual students or groups of students.”
- ❖ **The modern standardized testing movement in the United States began with the enactment of the Elementary and Secondary Education Act of 1965 (ESEA).** ESEA was followed by the No Child Left Behind Act of 2001 (NCLB) that reauthorized and amended ESEA by mandating annual testing in reading, math, and science subject to strict federal oversight. In 2015, the Every Student Succeeds Act (ESSA) repealed NCLB and reauthorized and amended ESEA by shifting power back to states and local school districts to determine how to improve troubled public schools.
- of six tests: PSSA, Keystone Exams, PASA, ACCESS for ELLs, CDT, and NAEP (all, except the CDT, are both state and federally mandated).
- ❖ **Pennsylvania’s school districts administer numerous other standardized tests.** These other exams (e.g., ACT, ASVAB, DIBELS, and SAT) are either voluntarily or mandatorily administered at the discretion of local school districts.
- ❖ **The majority of principals and teachers indicated they do not consider the PSSA exam or Keystone Exams to be effective indicators of student achievement, teacher evaluation, or school building performance.** Greater percentages of respondents, both principals and teachers, indicated they neither agree nor disagree regarding the effectiveness of Keystone Exams versus the PSSA exams in measuring performance.
- ❖ **Both principals and teachers indicated curricula scope has been narrowed to prepare students for PSSA exams and Keystone Exams.** The majority of principals and teachers indicated students are taught test-taking skills and administered practice tests in relation to the PSSA exams and Keystone Exams.



- ❖ **The origins of Pennsylvania standardized testing and state assessments can be traced back to the enactment in 1963 of the School District Reorganization Act (Act 1963-299).** In 1999, the foundation of Pennsylvania’s modern assessment system was laid when the State Board adopted Chapter 4 Academic Standards and Assessment regulations. The Pennsylvania state assessment system consists
- ❖ **PDE indicated, in general, Pennsylvania state standardized tests continue to meet their intended uses to assess whether students are learning required content.** However, the assessments have been used at times for additional purposes beyond their original intent (e.g., graduation requirements, measuring teacher effectiveness, school building performance) with varied levels of success.

- ❖ **It is unlikely a transition to a nationally recognized high school assessment would result in the need for realignment of state academic standards as each individual state is authorized to establish its own academic standards and employ assessments.** A number of states using the ACT or SAT tests for high school assessment purposes have submitted for USDE peer review. Although the ACT or SAT may not align point for point with a state’s specific academic standards, the states using these tests maintain these tests are reasonably aligned for federal assessment purposes.
- ❖ **Pennsylvania’s VAAS can provide growth measures using ACT or SAT at the district and school levels using prior PSSA tests to set the expected scores of students.** Teacher growth measures, however, cannot be provided using ACT or SAT.
- ❖ **Accommodations are tools and procedures that provide equal access to instruction and assessment for students with disabilities.** Accommodations do not reduce expectations for learning. Generally speaking, accommodations do not impact the validity of assessments or the validity of the test as a growth measure as long as the state adheres to the recommended processes for developing the assessments and the state’s accommodation policies.
- ❖ **A small number of opt-outs could impact Pennsylvania’s Future Ready PA Index rating system.** Federal law specifies that state and local laws are not preempted from allowing parents to have their children opt-out of assessments.

Report Released: September 2019

A Study of Pennsylvania’s Dairy Industry

Background:

Senate Resolution 384 (2018 session) directed the Legislative Budget and Finance Committee (LBFC) to conduct a study on the past, present, and future issues impacting dairy producers and the dairy industry. Our report reviews the historical context of milk regulation (federal and state), and the key difficulties confronting the dairy industry. We also make recommendations to improve the fairness, potential, and oversight of Pennsylvania’s milk market.

Summary of Findings:

- ❖ **Pennsylvania dairy producers are experiencing an ongoing crisis.** Dairy producers (farmers) are paid on a “hundred weight” basis, which is approximately 11 gallons of milk. Dairy pricing has always been cyclical, but over the past five years—the longest period in recent memory—dairy producers have faced continuous low milk prices for their product.
- ❖ **Low dairy prices can be attributed to oversupply.** It is difficult to identify any one factor that is leading to oversupply. Experts agree that there is too much supply for existing demand. Demand is weak as a result of declining consumption of fluid (beverage) milk, which is likely attributable, in part, to the upsurge of plant-based milks. International trade practices also contribute to the weak demand for dairy-related products. Supply is high because of modernization and efficiencies in production and processing. Additionally, in Pennsylvania, despite low producer prices, production actually increased as producers tried to recoup previous losses. Although this trend ceased in 2018, it also contributed to the oversupply of milk.
- ❖ **The dairy industry is very complex and involves a complicated interplay between federal and state orders, regulations, and laws.**

Historically, dairy producers were subject to unfair business practices, which created instability in the market. To protect producers and ensure a steady supply of milk at fair prices, the federal government created a series of Federal Milk Marketing Orders (FMMOs). Portions of Pennsylvania are covered by two separate FMMOs. Additionally, in 1937 Pennsylvania enacted the Milk Marketing Law (Law), which provides additional regulatory protections for milk transactions occurring within Pennsylvania's borders. The Law is administered by the Pennsylvania Milk Marketing Board (PMMB), a three member board, which sets minimum milk prices at the producer, processor (wholesale), and retail level. Another important aspect of the PMMB, is the setting of the over-

order premium (OOP), which is an additional fee payable to Pennsylvania dairy producers on fluid milk. Pennsylvania is the only state with this type of added premium on fluid milk sales. We found the PMMB provides an important and necessary function for Pennsylvania producers.

❖ **Pennsylvania's dairy industry is important to the state's economy.** The dairy industry is the number one segment of Pennsylvania's agricultural economy. We calculated various economic impacts and found that every cow generates approximately \$16,864 in direct economic benefits. Further, the industry supports more than 45,000 jobs, with total wages of over \$1.8 billion.

RECOMMENDATIONS

1. **Regulate Plant-based Milks as a Class V Milk Product.** Federal product identity requirements are not enforced—a significant unfairness to dairy producers. The Law may provide a pathway to correct this unfairness, and a fee would also provide needed revenue to fund the PMMB's duties.
2. **Clarify Milk Date Coding Requirements.** Fluid milk in Pennsylvania currently has an unnecessary 17 day "sell-by" date—the second strictest of any state.
3. **License Milk Retailers to Capture More Detail About Milk Sales in Pennsylvania.** Actual data on retail sales would better inform future decision-making.
4. **Expand Existing Research and Development Assistance for the Dairy Industry.** New products will improve demand for dairy-based products.
5. **Aid the Development/Construction of Cheese Plants.** Large leads in capacity are already held by Wisconsin and California, but if Pennsylvania can attract new plants, the potential exists to increase demand for milk.
6. **Further Develop Pennsylvania's Identity and Uniqueness for Fluid Milk.** Recent efforts are a good first start, but a broader campaign is also necessary.
7. **Expand the Size of the Milk Marketing Board.** Expanding to five members would allow more inclusivity from all segments of the dairy industry.
8. **Change the Name of the Milk Marketing Board.** Milk Control Board better suits the duties of the Board.
9. **Improve the Transparency and Distribution of the PMMB's Over-Order Premium.** Many producers are unsure how much of the OOP they actually receive. Further, some of the OOP may be "stranded" because the milk originated, or was sent for processing, outside of Pennsylvania's borders.

SECTION IV
2019 PROJECTS READY FOR RELEASE, IN PROCESS,
OR ASSIGNED



Senate Resolution 20 (Baker) - A Senate Resolution directing the Legislative Budget and Finance Committee to conduct a study of the impact of venue for medical professional liability actions on access to medical care and maintenance of health care systems in this Commonwealth and requesting that the Pennsylvania Supreme Court delay action on the proposed amendment to Pa.R.C.P. No. 1006. This report is currently in process and due for completion and release in early February 2020.

Act 2019-20 (Senate Bill 712) Fiscal Code - The Legislative Budget and Finance Committee shall evaluate the environmental impact and any impact upon residents of this Commonwealth from any regulation impacting single-use plastics, reusable plastics, auxiliary containers, wrappings or polystyrene containers and submit a full report of its findings to the General Assembly. This report is currently in process and due for completion and release in July 2020.

Senate Resolution 48 (Phillips-Hill) - A Senate Resolution directing the Legislative Budget and Finance Committee to conduct a review of the compliance of telecommunication carriers with the high-speed broadband deployment mandates of the Public Utility Code and to report findings and recommendations to the Senate. This report is currently in process and due for completion and release in spring 2020.

Senate Resolution 105 (Stefano) - A Senate Resolution directing the Legislative Budget and Finance Committee to conduct a study of the statutory cap on the Pennsylvania State Police complement and issue a report of its findings and recommendations to the Senate. This report is currently in process and due for completion and release in spring 2020.

HR 507 (Hahn) - A House Resolution directing the Legislative Budget and Finance Committee to conduct a study and issue a report analyzing the current Pennsylvania health and human services hotlines and their cost to the Commonwealth. This report is currently in process and due for completion and release 210 days after its adoption on November 19, 2019.

SECTION V
REPORTS COMPLETED SINCE 1981
(Sunset & Non-Sunset)



1981

1. Annual Report of the Pennsylvania Legislative Budget and Finance Committee to the Pennsylvania General Assembly - 1/81
2. Funds of the Commonwealth - Fifth Edition - 3/81
3. Legislative Budget and Finance Committee Statistical Digest - 3/81
4. A Legislator's Guide to Capital Construction Projects - Second Edition - 5/81
5. Pennsylvania Department of Public Welfare's Long-Term Care Medicaid Reimbursement System, Report on the - 5/81
6. Operator Licensing Process, Bureau of Motor Vehicles and Licensing, Pennsylvania Department of Transportation, Report on the - 6/81
7. Nuclear Power Plants, Survey of Pennsylvania State Agencies Regarding Activities Intended to Protect Persons and Property From Dangers Associated With - 8/81
8. A Report on the Pennsylvania Department of Transportation's Allocation of State Highway Maintenance Monies Under Act 68 of 1980 - 12/81
9. MAMIS and the Timeliness of Medical Assistance Payments to Service Providers - 12/81

1982

10. Legislative Budget and Finance Committee Annual Report to the Pennsylvania General Assembly - 1/82
11. Electric Light Usage in State Office Buildings - 1/82
12. Special Supplemental Food Program for Women, Infants and Children (WIC), A Report on Significant Aspects of Pennsylvania's Administration of the - 1/82
13. Legislative Budget and Finance Committee Statistical Digest - 3/82
14. Pennsylvania Department of Transportation Performance Audit, Planning Guide for the (Developed by Price Waterhouse) - 4/82

15. Relations Between the Department of Public Welfare and Service Providers: Information and Comments From Medical Service Providers in Pennsylvania - 11/82
16. The Motor Carriers Road Tax Identification Marker (IM) Requirements: Administration and Enforcement Practices and a Discussion of Violations - 12/82

1983

17. Legislative Budget and Finance Committee Annual Report to the Pennsylvania General Assembly - 1/83
18. State Board of Examiners of Public Accountants, A Sunset Performance Audit of the Pennsylvania- 2/83
19. State Board of Examiners of Architects, A Sunset Performance Audit of the Pennsylvania - 2/83
20. State Board of Auctioneer Examiners, A Sunset Performance Audit of the Pennsylvania - 2/83
21. Emergency Medical Services in Pennsylvania, Report on the Organizational Structure and Funding of - 2/83
22. State Registration Board for Professional Engineers, A Sunset Performance Audit of the Pennsylvania - 2/83
23. State Board of Funeral Directors, A Sunset Performance Audit of the Pennsylvania - 2/83
24. State Board of Landscape Architects, A Sunset Performance Audit of the Pennsylvania - 2/83
25. State Board of Motor Vehicle Manufacturers, Dealers and Salesmen, A Sunset Performance Audit of the Pennsylvania - 2/83
26. State Real Estate Commission, A Sunset Performance Audit of the Pennsylvania - 2/83
27. Pennsylvania Vocational Rehabilitation Program, Report on the Nature and Impact of Policy Changes and Staff Reductions in the - 2/83
28. Supplement to # 27 above (Results of LB&FC Questionnaire to Counselor and District Administrator Staff of the Pennsylvania Office of Vocational Rehabilitation) - 2/83
29. Legislative Budget and Finance Committee Statistical Digest - 3/83
30. Governor's Veterans Outreach and Assistance Centers (GVOAC) Program, Report on an Analysis of Services Provided by the - 6/83
31. Pennsylvania Axle Tax for Highway Bridge Improvement (Act 234 of 1982): A Report on Its Collection and Economic Impact on the Pennsylvania Trucking Industry - 7/83

32. State Board of Barber Examiners, A Sunset Performance Audit of the - 7/83
33. State Board of Cosmetology, A Sunset Performance Audit of the Pennsylvania - 7/83
34. Crime Victim's Compensation Board, A Sunset Performance Audit of the Pennsylvania - 7/83
35. Hazardous Substances Transportation Board, A Sunset Performance Audit of the - 7/83
36. Pennsylvania Savings Association Board, A Sunset Performance Audit of the - 7/83
37. Citizens Advisory Council to the Department of Environmental Resources, A Sunset Performance Audit of the - 11/83
38. Environmental Quality Board, A Sunset Performance Audit of the Pennsylvania - 11/83
39. Labor Relations Board, A Sunset Performance Audit of the Pennsylvania - 11/83
40. Securities Commission, A Sunset Performance Audit of the Pennsylvania - 11/83
41. State Board of Private Trade Schools, A Sunset Performance Audit of the - 11/83

1984

42. Legislative Budget and Finance Committee Annual Report Submitted to the Pennsylvania General Assembly - 1/84
43. State Farm Products Show Commission, A Sunset Performance Audit of the - 2/84
44. Pennsylvania Department of Transportation, Interim Report Supplement #1 - Report on Study Activities and Methodologies Conducted by Project Consultant Firms During the Preliminary Survey Phase of the Performance Audit - 2/84
45. Pennsylvania Department of Transportation, Interim Report Supplement #2 - Report on Background Information on the Department of Transportation Developed by Project Consultant Firms During the Preliminary Survey Audit Phase of the Performance Audit - 2/84
46. Pennsylvania Department of Transportation, Volume I of an Interim Report: Report on the Results of Preliminary Activities and Areas Selected for Detailed Audit - 2/84
47. Pennsylvania Department of Transportation, Volume II of an Interim Report: Commentary of the Department of Transportation in Response to the "DOT Performance Audit Interim Report" - 2/84
48. State Workmen's Insurance Board, A Sunset Performance Audit of the - 2/84
49. PA Bridge Inspection Programs and Activities, LB&FC Staff Assessment of - 3/84
50. Milk Marketing Board, A Sunset Performance Audit of the Pennsylvania - 3/84

51. Pennsylvania Department of Transportation: Audit Follow-Up Report by Price Waterhouse on Electronic Data Processing Security and Control Improvements Accomplished by the Pennsylvania Department of Transportation - 3/84
52. Legislative Budget and Finance Committee Statistical Digest - 4/84

Pennsylvania Department of Transportation, Performance Audit of the (8 Detailed Audit Reports) - 5/84
53. Report #1 - Report by Price Waterhouse on the Pennsylvania Department of Transportation's Equipment Management/Procurement Process
54. Report #2 - Report by Price Waterhouse on the Pennsylvania Department of Transportation's Right-of-Way Management and Disposal Practices
55. Report #3 - Report by Price Waterhouse on the Pennsylvania Department of Transportation's Organizational and Functional Framework
56. Report #4 - Report by Day and Zimmerman, Inc., on the Pennsylvania Department of Transportation's Productivity Improvement Efforts and Performance Measures
57. Report #5 - Report by Northwest Institute of Research on Certain Aspects of Driver License Suspension Procedures
58. Report #6 - Report by Deloitte Haskins & Sells on the Pennsylvania Department of Transportation's Monetary Relationship with Contractors
59. Report #7 - Report by Deloitte Haskins & Sells on the Pennsylvania Department of Transportation's Audit Planning and Risk Assessment
60. Report #8 - Report by the LB&FC Staff on Selected Issues Relating to Programs and Operations of the Pennsylvania Department of Transportation
61. State Dental Council and Examining Board, A Sunset Performance Audit of the - 8/84
62. State Board of Medical Education and Licensure, A Sunset Performance Audit of the - 8/84
63. State Board of Osteopathic Medical Examiners, A Sunset Performance Audit of - 8/84
64. State Board of Podiatry Examiners, A Sunset Performance Audit of the - 8/84
65. Consumer Protection and Citizen Redress Activities of Pennsylvania State Government, Report on an Evaluation of Selected - 11/84
66. State Board of Chiropractor Examiners, A Sunset Performance Audit of the - 12/84
67. Human Relations Commission, A Sunset Performance Audit of the Pennsylvania - 12/84

- 68. State Board of Pharmacy, A Sunset Performance Audit of the - 12/84
- 69. State Board of Physical Therapy Examiners, A Sunset Performance Audit of the - 12/84
- 70. Board of Probation and Parole, A Sunset Performance Audit of the Pennsylvania - 12/84
- 71. State Board of Veterinary Medical Examiners, A Sunset Performance Audit of the - 12/84

1985

- 72. Annual Report of the Legislative Budget and Finance Committee Submitted to the Pennsylvania General Assembly - 1/85
- 73. Governor's Council on Drug and Alcohol Abuse, A Sunset Performance Audit of the - 2/85
- 74. Drug, Device and Cosmetic Board, A Sunset Performance Audit of the Pennsylvania - 2/85
- 75. Housing Finance Agency, A Sunset Performance Audit of the Pennsylvania - 2/85
A Sunset Performance Audit of the PA Liquor Control Board (Volumes I - IV) - 2/85
- 76. Volume I - LB&FC Staff Sunset Performance Audit Report
- 77. Volume II - Report by Price Waterhouse on State Store and Warehouse Distribution Operations of the Pennsylvania Liquor Control Board
- 78. Volume III - Report by Deloitte Haskins & Sells on Financial Projections and Certain Other Factors Concerning the Continuation, Termination or Modification of the Pennsylvania Liquor Control Board State Store System
- 79. Volume IV - Report by Deloitte Haskins & Sells on an Examination and Evaluation of the Licensing Function of the Pennsylvania Liquor Control Board
- 80. A Sunset Performance Audit of the State Board of Nurse Examiners - 2/85
- 81. A Sunset Performance Audit of the State Board of Examiners of Nursing Home Administrators - 2/85
- 82. A Sunset Performance Audit of State Board of Optometrical Examiners - 2/85
- 83. A Sunset Performance Audit of the State Board of Psychologist Examiners - 2/85
A Sunset Performance Audit of the Pennsylvania Public Utility Commission (Volumes I and II were Released 2/85 and Volume III was Released 5/85)
- 84. Volume I - LB&FC Staff Sunset Performance Audit Report

85. Volume II - Report by Touche Ross & Company on Review of Rate-Making Process
86. Volume III - Supplemental Report by LB&FC Staff on PUC Activities in Response to Changes in the Telephone Industry
87. Legislative Budget and Finance Committee Statistical Digest - 4/85
88. A Sunset Performance Audit of the Commission on Charitable Organizations - 6/85
89. A Sunset Performance Audit of the State Conservation Commission - 6/85
90. A Sunset Performance Audit of the Pennsylvania Crime Commission - 6/85
91. A Sunset Performance Audit of the Pennsylvania Commission on Crime and Delinquency - 6/85
92. A Sunset Performance Audit of the State Harness Racing Commission - 6/85
93. A Sunset Performance Audit of the State Horse Racing Commission - 6/85
94. A Report on Low-Bid Rejections in the Department of Transportation Contract Award Process - 6/85
95. A Sunset Performance Audit of the Pennsylvania Commission on Sentencing - 6/85
96. A Sunset Performance Audit of the State Transportation Commission - 6/85
97. A Sunset Performance Audit of the State Board of Public Welfare - 6/85
98. Report on a Study of Issues Related to the Potential Operation of Private Prisons in Pennsylvania - 10/85
99. Audit of the Budget of the Pennsylvania Game Commission - 11/85
100. Information about the Sunset Performance Audit Process (Update) - 11/85

1986

101. Annual Report of the Legislative Budget and Finance Committee Submitted to the Pennsylvania General Assembly - 1/86
102. Report on an Evaluation Study of Government Funded Job Training Programs in Pennsylvania - 1/86
103. Report on a Study of Issues Related to Truck Safety Enforcement in Pennsylvania - 1/86
104. Report on a Performance Audit of the Pennsylvania Workers' Compensation Program - 1/86

105. Legislative Budget and Finance Committee Statistical Digest - 4/86
106. A Sunset Performance Audit of the State Board of Private Academic Schools - 6/86
107. A Sunset Performance Audit of the State Board of Private Business Schools - 6/86
108. A Sunset Performance Audit of the State Board of Private Correspondence Schools - 6/86
109. A Sunset Performance Audit of the State Board of Education - 6/86
110. Report on a Study of Mass Transit Funding Needs in Pennsylvania - 6/86
111. A Sunset Performance Audit of the Professional Standards and Practices Commission - 6/86
112. Report on a Performance Audit of Pennsylvania's Temporary Emergency Food Assistance (Surplus Foods) Program - 6/86
113. Report on an Evaluation of the Commonwealth's Liability for and Response to Unsafe Road Conditions - 6/86
114. Interim Report on a Study of Pennsylvania's Certificate of Need Program - 8/86
115. A Sunset Performance Audit of the State Ethics Commission - 9/86
116. A Sunset Performance Audit of the Pennsylvania Historical and Museum Commission - 9/86
117. A Sunset Performance Audit of the Industrial Board - 9/86
118. A Sunset Performance Audit of the Pennsylvania Industrial Development Authority - 9/86
119. A Sunset Performance Audit of the Pennsylvania Minority Business Development Authority - 9/86
120. A Sunset Performance Audit of the State Veterans' Commission - 9/86
121. A Sunset Performance Audit of the State Board of Vocational Rehabilitation - 9/86
122. A Sunset Performance Audit of the State Civil Service Commission - 11/86
123. Report on an Audit of the FY 1985-86 Budget of the Pennsylvania Game Commission - 11/86
124. A Sunset Performance Audit of the Pennsylvania Emergency Management Agency - 12/86
125. Interim Report on a Study of the Low Income Home Energy Assistance Program - 12/86
126. A Sunset Performance Audit of the Pennsylvania Parkway Commission - 12/86

1987

127. Annual Report of the Legislative Budget and Finance Committee Submitted to the Pennsylvania General Assembly - 1/87
128. A Sunset Performance Audit of the Department of Aging - 2/87
129. A Sunset Performance Audit of the State Art Commission - 2/87
130. A Sunset Performance Audit of the Pennsylvania State Athletic Commission - 2/87
131. Report on Pennsylvania's Certificate of Need Program - 2/87
132. A Sunset Performance Audit of the Municipal Police Officers' Education and Training Commission - 2/87
133. A Sunset Performance Audit of the State Planning Board - 2/87
134. A Sunset Performance Audit of the State Board for Certification of Sewage Enforcement Officers - 2/87
135. A Sunset Performance Audit of the State Board for Certification of Sewage Treatment Plant and Waterworks Operators - 2/87
136. A Sunset Performance Audit of the Pennsylvania Turnpike Commission - 2/87
137. Final Report on an Evaluative Study of the Low Income Home Energy Assistance Program - 4/87
138. Legislative Budget and Finance Committee Statistical Digest - 4/87
139. Interim Report on a Performance Audit of the Administration of Pennsylvania's Subsidized Child Day Care Program - 6/87
140. Report on a Performance Audit of the Emergency Medical Services Funding Provisions of Act 1985-45 - 6/87
141. Interim Report on a Performance Audit of the Pennsylvania State Lottery - 6/87
142. Report on Follow-Up Study of Truck Safety Enforcement in Pennsylvania - 6/87
143. Report on a Study of the Feasibility of State Funding of an Anti-Rejection Medication (Cyclosporine) for Pennsylvania-Resident Organ Transplant Patients - 7/87
144. Follow-Up Study Concerning the Legal Status of the Municipal Police Officers' Education and Training Commission - 7/87
145. Performance Audit of the Weatherization Programs in Pennsylvania - 7/87

146. Report on a Performance Audit of the Administration of Pennsylvania's Subsidized Child Day Care Program - 9/87
147. Follow-Up to Legislative Budget and Finance Committee Performance Audit of the Emergency Medical Services Funding Provisions of Act 1985-45 - 9/87
148. Supplement to #147 Above (Response of the PA Department of Health to the Follow-Up Report) - 9/87
149. Report on a Performance Audit of the Pennsylvania State Lottery - 9/87
150. Follow-Up Monitoring of Truck Safety Enforcement - 9/87
151. Report on a Follow-Up of Weights and Measures Enforcement Activities in Pennsylvania State Government - 9/87
152. Interim Report on a Performance Audit of the PA Department of Corrections - 10/87
153. Report on an Audit of the Fiscal Year 1986-87 Budget of the Pennsylvania Game Commission - 11/87
154. Interim Report on a Performance Audit of the Pennsylvania Insurance Department - 12/87
155. Report on an Evaluation of Commonwealth Truck Weight Enforcement Efforts - 12/87

1988

156. Legislative Budget and Finance Committee Annual Report to the Pennsylvania General Assembly - 1/88
157. A Sunset Performance Audit of the Ben Franklin Partnership Program - 2/88
158. A Sunset Performance Audit of the Independent Regulatory Review Commission - 2/88
159. Interim Report on a Performance Audit of the Pennsylvania Job Service - 3/88
160. Report on a Performance Audit of the Pennsylvania Department of Corrections - 4/88
161. Legislative Budget and Finance Committee Statistical Digest - 4/88
162. Report on a Performance Audit of the Pennsylvania Insurance Department - 5/88
163. Report on a Performance Audit of the Pennsylvania Job Service - 6/88
164. Report on a Performance Audit of the Environmental Hearing Board - 6/88
165. Report on a Performance Audit of the PA Department of Corrections - Volume II - 6/88

166. Study of Computer "Viruses" and Their Potential for Infecting Commonwealth Computer Systems - 9/88
167. Report on the PA Job Service Coordination With Other Related Agencies and Proposed Job Service Act - 9/88
168. Interim Report on a Study of the Impact and Financial Feasibility of Combining the PA Fish and Game Commissions - 9/88
169. A Report on Compliance With Requirements for Publishing of State Regulatory and Policy Documents - 9/88
170. Interim Report on an Evaluation of Human Services Programs Quality Assurance Systems - 9/88
171. Report on an Audit of the Fiscal Year 1987-88 Budget of the Pennsylvania Game Commission - 11/88

1989

172. Legislative Budget and Finance Committee Annual Report to the Pennsylvania General Assembly - 1/89
173. Report on Salary Levels and Their Impact on Quality of Care for Client Contact Workers in Community-Based MH/MR and Child Day Care Programs - Volume I - 2/89
174. Report on Salary Levels and Their Impact on Quality of Care for Client Contact Workers in Community-Based MH/MR and Child Day Care Programs - Volume II - Comments from Provider Agencies - 2/89
175. A Sunset Performance Audit of the Office of Consumer Advocate - 2/89
176. LB&FC Plan for the Conduct of Act 1981-35 Mandated Performance Audit of the Department of Transportation - 3/89
177. An Examination of the Pennsylvania Logo Signing Program - 3/89
178. Report on an Evaluation of Quality Assurance Systems in Pennsylvania's Human Services Programs - 4/89
179. LB&FC Report on a Study of the Financial Feasibility and Potential Impacts of a Merger of the PA Fish Commission and the PA Game Commission - Volume I - 4/89
180. LB&FC Report on a Study of the Financial Feasibility and Potential Impacts of a Merger of the PA Fish Commission and the PA Game Commission - Volume II - 4/89
181. Legislative Budget and Finance Committee Statistical Digest - 4/89

182. A Sunset Performance Audit of the Pennsylvania MILRITE Council - 6/89
183. A Report on a Follow-Up Audit of the Pennsylvania Turnpike Commission - 9/89
184. Interim Report on an Evaluation of Commonwealth Drug Abuse Programs - 9/89
185. Interim Report on a Performance Audit of the PA Department of Transportation - Volume I - Planned Areas of Audit Review - 10/89
186. Interim Report on a Performance Audit of the PA Department of Transportation - Volume II - Status of Recommendations 1983-84 PennDOT Performance Audit and Subsequent LB&FC PennDOT Evaluations - 10/89
187. Report on an Audit of the Fiscal Year 1988-89 Budget of the Pennsylvania Game Commission - 11/89

1990

188. Legislative Budget and Finance Committee Annual Report to the Pennsylvania General Assembly - 1/90
189. Report on a Study of Pennsylvania State Government Computer Purchasing Practices - 1/90
190. Report on a Study of the Need for and Availability of Transportation Services for Persons with Disabilities - 4/90
191. An Evaluation of Pennsylvania Department of Health Drug Abuse Treatment Programs - 4/90
192. Legislative Budget and Finance Committee Statistical Digest - 4/90
193. A Performance Audit of the PA Department of Transportation - 6/90
194. A Sunset Performance Audit of the Public Employee Retirement Study Commission - 6/90
195. Report on an Audit of the FY 1989-90 Budget of the PA Game Commission - 11/90
196. Report on a Sunset Performance Audit of the Crime Victims' Compensation Board - 11/90
197. Report on a Sunset Performance Audit of the Pennsylvania Human Relations Commission - 11/90
198. Report on Drug Law Enforcement Efforts in Pennsylvania - 12/90
199. Report on a Performance Audit of Select Commonwealth Management Controls for Drug Treatment and Prevention Programs - 12/90

1991

- 200. 1991 Annual Report to the General Assembly - 1/91
- 201. Report on a Sunset Performance Audit of the Public Utility Commission - 2/91
- 202. Report on a Sunset Performance Audit on the State Board of Optometry - 2/91
- 203. Report on a Sunset Performance Audit on the Advisory Council for the Deaf and Hearing Impaired - 2/91
- 204. Report on a Sunset Performance Audit on the Pennsylvania Advisory Council on Drug and Alcohol Abuse - 2/91
- 205. Legislative Budget and Finance Committee Statistical Digest - 4/91
- 206. Performance Audit of the Health Department's Administration of the PA Head Injury Program - 6/91
- 207. Private Adoption Processes in Pennsylvania - 6/91
- 208. Study of the Administration of Commonwealth Veterans Programs - 10/91
- 209. Review of the Financial Health of Pennsylvania Hospitals Serving Disproportionately High Volumes of Medical Assistance Patients - 10/91
- 210. Sunset Performance Audit of the State Board of Occupational Therapy Education and Licensure - 10/91
- 211. Performance Audit of the Health Department Administration of the Emergency Medical Services Operating Fund - 11/91
- 212. Evaluation of Adoption Processes for Children With Special Needs - 11/91
- 213. Fiscal Year 1990-91 Budget Audit of the Pennsylvania Game Commission - 11/91
- 214. Sunset Performance Audit of the Agricultural Farm Operations Advisory Committee - 11/91
- 215. Sunset Performance Audit of the Noxious Weed Control Committee - 11/91

1992

- 216. 1992 Annual Report to the General Assembly - 1/92
- 217. Performance Audit - Certificate of Need Program - Volume I - 4/92
- 218. Performance Audit - Certificate of Need Program - Volume II (Technical Appendices) - 4/92

- 219. Performance Audit - Pennsylvania Emergency Management Agency - 4/92
- 220. Performance Audit - Capitol Preservation Committee - 4/92
- 221. Legislative Budget and Finance Committee Statistical Digest - 4/92
- 222. Performance Audit - Pennsylvania Liquor Control Board - Volume I - 5/92
- 223. Performance Audit - Pennsylvania Liquor Control Board - Volume II - 5/92
- 224. Performance Audit - Pennsylvania Liquor Control Board - Volume III - 5/92
- 225. Performance Audit - Health Care Cost Containment Council - 5/92
- 226. Fiscal Year 1991-92 Budget Audit of the PA Game Commission - 11/92
- 227. Performance Audit - Rail Freight Advisory Committee - 12/92
- 228. Performance Audit - Board of Governors of the State System of Higher Education - 12/92
- 229. Performance Audit - Dog Law Advisory Board - 12/92
- 230. Performance Audit - Prof. Engineers and Prof. Land Surveyors Registration Board - 12/92
- 231. Performance Audit - Wild Resource Conservation Committee - 12/92

1993

- 232. 1993 Annual Report to the General Assembly - 1/93
- 233. Evaluation of the Medical Cost Containment Provisions of Act 1990-6 - 3/93
- 234. Performance Audit - Pharmaceutical Assistance Review Board - 4/93
- 235. Legislative Budget and Finance Committee Statistical Digest - 4/93
- 236. Performance Audit - State Board of Accountancy - 4/93
- 237. Performance Audit - Office of Small Business Advocate - 4/93
- 238. Evaluation of Pennsylvania's Tourism Promotion Programs - 6/93
- 239. Performance Audit - State Real Estate Commission - 9/93
- 240. Performance Audit - State Workmen's Insurance Board - 11/93
- 241. Pennsylvania Game Commission, FY 1992-93 Budget Audit - 11/93

1994

- 242. Annual Report to the General Assembly - 1/94
- 243. Performance Audit - State Board of Funeral Directors (Volumes I and II) - 1/94
Volume I - Performance Audit
- 244. Volume II - An Evaluation of Pre-Need Funeral Regulation in Pennsylvania
- 245. Performance Audit - State Board of Vehicle Manufacturers, Dealers and Salespersons - 3/94
- 246. Legislative Budget and Finance Committee Statistical Digest - 4/94
- 247. Commonwealth Programs and Initiatives for Pregnant and Parenting Teens - 4/94
- 248. Enhanced Emissions Inspection Program in Pennsylvania, Preliminary Report - 6/94
- 249. Enhanced Emissions Inspection Program in Pennsylvania, Final Report - 6/94
- 250. Review of PennDOT's Handling of Pennsylvania's Spring 1994 Pothole Problems - 6/94
- 251. State Lottery Funding of Programs and Services for Older Pennsylvanians - 6/94
- 252. Affordability and Availability of Auto Insurance in Southeastern PA - 11/94
- 253. Costs to Implement the Federal Clean Air Act - 11/94
- 254. Physician Self-Referral Practices in Pennsylvania - 11/94
- 255. Pennsylvania Game Commission, FY 1993-94 Budget Audit - 11/94

1995

- 256. 1995 Annual Report to the General Assembly - 1/95
- 257. Computer Interoperability Within Pennsylvania State Government - 2/95
- 258. Costs and Consequences of the June 1994 Fire in the Transportation and Safety Building - 3/95
- 259. Legislative Budget and Finance Committee Statistical Digest - 4/95
- 260. Dropout and Truancy Prevention Programs and Efforts - 4/95
- 261. PA Minority Business Development Authority (PMBDA), Pursuant to HR 25 - 5/95
- 262. Status of Siting a Regional Low-Level Radioactive Waste Disposal Facility in Pennsylvania - 5/95

- 263. BP&OA Disciplinary Actions Since the Lyness Decision - 10/95
- 264. Funds of the Commonwealth: A Report on the State's Special Funds - 10/95
- 265. Pennsylvania Game Commission, FY 1994-95 Budget Audit - 11/95
- 266. A Status Report on Pennsylvania's Weights and Measures Program - 12/95

1996

- 267. Performance Review of the Department of Commerce's Economic Development Programs - 1/96
- 268. Annual Report to the General Assembly - 1/96
- 269. A Review of Juvenile Justice Programs and Services in Pennsylvania - 1/96
- 270. Legislative Budget and Finance Committee Statistical Digest - 4/96
- 271. Study of the Medical Professional Liability Catastrophe Loss Fund - 6/96
- 272. Performance Audit of the Pennsylvania Department of Transportation - 6/96
- 273. Review of the Certificate of Need Program - 11/96
- 274. A Review of the Commonwealth's Early Intervention Programs - 11/96
- 275. A Study of the Statutory Cap on the Pennsylvania State Police Complement - 12/96

1997

- 276. Annual Report to the General Assembly - 1/97
- 277. Pennsylvania Game Commission, FY 1995-96 Budget Audit - 2/97
- 278. The Fiscal Impact on Counties of the Pennsylvania Voter Registration Act - 3/97
- 279. Pennsylvania Turnpike Commission Performance Audit Report I
Implementation of Act 61 Turnpike Improvement & Extension Projects - 4/97
- 280. Legislative Budget and Finance Committee Statistical Digest - 4/97
- 281. State Farm Show Complex Performance Audit - 6/97
- 282. Review of County 911 Expenditures - 6/97
- 283. Toll-Free Telephone Program at the Center for Local Government - 6/97

- 284. Turnpike Commission, Performance Audit Report II - 7/97
- 285. Review of the District Justice Computer System - 10/97
- 286. Performance Audit of the Children's Trust Fund - 11/97
- 287. The Commonwealth's Year 2000 Computer Problem - 12/97

1998

- 288. 1997 Annual Report to the General Assembly - 1/98
- 289. An Actuarial Review of the HealthChoices Program in Southeastern Pennsylvania - 2/98
- 290. A Performance Audit of the Emergency Medical Services Operating Fund - 2/98
- 291. Pennsylvania Game Commission Budget Audit, FY 1996-97 - 2/98
- 292. Legislative Budget and Finance Committee Statistical Digest - 4/98
- 293. Study on Civil Service Reform - 4/98
- 294. A Performance Audit of the Department of Community and Economic Development - Community Development Programs - 7/98
- 295. An Audit of the PA Fish and Boat Commission's Budget - 7/98
- 296. A Status Report on Information Technology Upgrades by the Pennsylvania State Police - 7/98
- 297. The Year 2000 Computer Problem in Local Governments and School Districts – 9/98
- 298. Independent Evaluations in the Birth to Age Three Early Intervention Program – 9/98
- 299. A Reexamination of Pennsylvania's Weights and Measures Program – 11/98

1999

- 300. 1998 Annual Report to the General Assembly – 1/99
- 301. Salary Levels and Their Impact on Quality of Care for Client Contact Workers in Community-Based MH/MR Programs – 2/99
- 302. The Distribution of State Aid to Volunteer Firefighters' Relief Associations – 2/99
- 303. Legislative Budget and Finance Committee Statistical Digest - 3/99
- 304. A Report on Operations and Pricing at Pennsylvania Turnpike Service Plazas – 6/99

- 305. Salary Levels and Their Impact on Quality of Care for Child Care Workers in Licensed Child Day Care Programs – 6/99
- 306. Commonwealth Efforts to Assure Quality of Care in the Changing Health Care Environment – 6/99
- 307. Pennsylvania’s Children and Youth System – 6/99
- 308. A Performance Audit of the Pennsylvania Commission on Sentencing – 10/99
- 309. Pennsylvania’s Preparedness for the Year 2000 Problem – 10/99

2000

- 310. 1999 Annual Report to the General Assembly – 1/00
- 311. Ben Franklin/IRC Partnership, Sunset Audit of the - 1/00
- 312. PA Voter Registration Act, Status of State and County Efforts to Implement the - 2/00
- 313. Pennsylvania Game Commission Compliance With Its Strategic Plan - 2/00
- 314. Commonwealth Funding of Mental Retardation Programs - 3/00
- 315. Legislative Budget and Finance Committee Statistical Digest - 3/00
- 316. Child Support Statewide Collections and Disbursement Unit, Performance Audit of the - 6/00
- 317. Crashes Involving Large Trucks on Pennsylvania Highways, State Government Efforts to Reduce - 7/00
- 318. Business and Consumer Bankruptcies, Representation of State Interests in - 7/00
- 319. Factors Affecting Motor Fuel Prices and the Competitiveness of PA’s Motor Fuels Market - 10/00
- 320. Department of Community and Economic Development’s Economic Development Programs - 10/00
- 321. Adequacy of Fees Charged in Pennsylvania’s Instant Check System for Firearms Purchases - 12/00
- 322. Long-Term Care Pharmacy Dispensing Costs - 12/00
- 323. Study of Costs and Services in Pennsylvania’s County Adult Probation System - 12/00

2001

- 324. 2000 Annual Report to the General Assembly – 1/01
- 325. The Accuracy of State Sales Tax Charges on Selected Consumer Items – 1/01
- 326. The Feasibility of Retrofitting High Rises, College Dorms, and Certain Other Buildings With Fire Sprinklers – Volume I – 1/01
- 327. The Feasibility of Retrofitting High Rises, College Dorms, and Certain Other Buildings With Fire Sprinklers – Volume II – 1/01
- 328. Medical Assistance Payments to Hospitals – 3/01
- 329. Legislative Budget and Finance Committee Statistical Digest - 3/01
- 330. A Review of Pennsylvania’s Tourist Signing Programs - 5/01
- 331. A Cost and Benefits Study of Mental Health Insurance Coverage Required by Act 1998-150 – 6/01
- 332. A Follow-Up Study of the Need for Additional Pennsylvania State Troopers – 6/01
- 333. A Review of Traffic Congestion Trends and Related Mitigation Efforts – 9/01
- 334. A Follow-Up Performance Audit of the Statewide Child Support Collections and Disbursements Unit – 9/01
- 335. A Financial and Management Review of the PIAA – 12/01
- 336. Commonwealth Regulation of Taxicab and Limousine Services – 12/01

2002

- 337. 2001 Annual Report to the General Assembly – 1/02
- 338. Legislative Budget and Finance Committee Statistical Digest – 3/02
- 339. Assessing the Reliability of Pennsylvania’s Electric Transmission and Distribution Program – 6/02
- 340. Funding and Service Delivery Levels in Pennsylvania’s Vocational Rehabilitation Program – 6/02
- 341. Performance Audit: Pennsylvania Department of Transportation – 7/02

342. Approaches Used in Other States to Provide School Property Tax Relief and Possible Options for Pennsylvania – 7/02

343. 2002 Review of PIAA Finances and Management – 11/02

2003

344. 2002 Annual Report to the General Assembly – 1/03

345. PA Game Commission Compliance With Its Strategic Plan – 2/03

346. Drug and Alcohol Treatment Services in a Managed Care Environment – 6/03

347. Providing Prescription Drug Coverage for Low and Moderate Income Senior Citizens – 6/03

348. The Status of “Project Link-to-Learn” and Other Educational Technology Initiatives – 6/03

349. Pennsylvania Public Utility Commission’s Implementation of Chapter 30 – 6/03

350. A Review of Large Truck Crashes Involving Fires on Pennsylvania Highways – 6/03

351. An Assessment of the Need for an Adult Protective Services Program – 10/03

352. Volume 1 - An Update on the Feasibility of a Combined Fish and Wildlife Commission for PA – 11/03

353. Volume 2 - Supplemental Information Compiled for Purposes of the HR 15 Merger Study – 11/03

354. The Status of DCNR’s Efforts to Improve the PA State Park Reservation and Revenue System – 12/03

2004

355. 2003 Annual Report to the General Assembly – 1/04

356. The Feasibility of Placing Public School Employees Under the Commonwealth’s Jurisdiction for the Purpose of Providing Health Benefits – 2/04

357. Commonwealth and Local Government Efforts to Ameliorate Blight – 3/04

358. Pennsylvania’s Response to Current and Projected Shortages in the Nursing Workforce– 4/04

359. Transferring Enforcement of Fish, Boat, and Game Laws to a Single Executive Branch Agency – 4/04

- 360. Study of the Pittsburgh Development Fund (PDF) – 5/04
- 361. Review of the Effectiveness of the Civil Service System in County Government – 10/04
- 362. An Examination of Costs and Test Prices in the “Drive Clean Pennsylvania” Emissions Inspection Program – 10/04
- 363. Feasibility and Potential Structure of a County-Based DUI Victim Impact Panel Program – 11/04
- 364. PUC Filing and Reporting Requirements on Local Exchange Carriers – 11/04

2005

- 365. 2004 Annual Report to the General Assembly – 1/05
- 366. Pennsylvania’s Workers’ Compensation System Compared to Nearby States – 2/05
- 367. DCNR Implementation of the Grants Portion of the Snowmobile and All-Terrain Vehicle Program – 2/05
- 368. Long Term Care for the Elderly in Pennsylvania – 4/05
- 369. Quality Assurance for Specialized Clinical Services – 4/05
- 370. The Feasibility of Regionalizing Pennsylvania’s Volunteer Fire Companies – 6/05
- 371. Review of the Operation and Structure of County Conservation Districts – 6/05
- 372. A Study of the Potential Economic, Social, and Other Impacts of Expanding Sunday Hunting in Pennsylvania – 6/05
- 373. Performance Study of the Administrative Operations and Expenditures of the Pittsburgh School District – 6/05
- 374. Considerations for Regulating Surplus Accumulation and Community Benefit Activities of Pennsylvania’s Blue Cross and Blue Shield Plans – 6/05

2006

- 375. 2005 Annual Report to the General Assembly – 1/06
- 376. The Adequacy of Fees Charged in Pennsylvania’s Instant Check System for Firearms Purchases – 2/06
- 377. State Funding Formulas in Pennsylvania – 2/06

- 378. Homestead Property, Sales and Use, and Personal Income Tax Estimates – 2/06
- 379. Reimbursement for Educational Services for Adjudicated Youth in Private Residential Facilities – 3/06
- 380. PA Game Commission Compliance With Its Strategic Plan – 3/06
- 381. A Program and Operational Review of the PA State Police’s Bureau of Liquor Control Enforcement – 6/06
- 382. Pennsylvania’s Mental Health System for Children and Youth – 6/06
- 383. Potential Costs and Impacts of HB 130 (Early Retirement Incentives) and HB 131 (COLA Increases) – 6/06
- 384. Motorcyclist Injuries and Fatalities Since the 2003 Repeal of the Mandatory Helmet Law – 6/06
- 385. The Cost to Pennsylvania’s Economy Resulting From School Starting Before Labor Day – 9/06
- 386. Commonwealth Services for the Deaf and Hearing Impaired – 9/06

2007

- 387. 2006 Annual Report to the General Assembly – 1/07
- 388. Performance Audit of the Public Utility Commission – 2/07
- 389. Various Aspects of Colorectal Cancer Screening – 2/07
- 390. Medicaid Reform Efforts in Other States and Their Applicability to Pennsylvania – 3/07
- 391. Do Shotguns and Muzzleloaders Pose Less Risk Than Centerfire Rifles for Hunting Deer in Pennsylvania? – 3/07
- 392. An Assessment and Cost Review of Personal Care Homes in Pennsylvania – 4/07
- 393. A Study of the Cost-Effectiveness of Consolidating Pennsylvania School Districts – 06/07
- 394. Performance Evaluation of Pennsylvania’s Organ and Tissue Donor Awareness Program – 06/07
- 395. A Review of Pennsylvania’s Homeland Security Program – 10/07
- 396. Lessons Learned From Three Mental Health Diversion and Post-Release Programs – 10/07
- 397. A Comprehensive Study and Review of Veteran Services in Pennsylvania – 10/07

398. Pennsylvania Health Care Cost Containment Council Performance Evaluation – 12/07

399. Growth in Medicaid Enrollment and Expenditures – 12/07

2008

400. 2007 Annual Report to the General Assembly – 1/08

401. Summary of the Financial and Academic Status of the Duquesne City School District – 1/08

402. Performance Audit of the Pennsylvania Fish and Boat Commission – 3/08

403. A Review of the Commonwealth's Strategic Sourcing Initiative in Procuring Goods and Services – 5/08

404. Feasibility of Requiring Shared-ride Services During Evenings and Weekends and for Inter-county Travel – 5/08

405. Feasibility of Limiting Polling Places to Handicap Accessible Schools and Government Buildings – 5/08

406. An Assessment of the Impact of Slots Gaming on Pennsylvania Lottery Sales – 6/08

407. Economic Impact of the Proposed Greater Hazleton Air Cargo Airport – 6/08

408. A Performance Audit of the Pennsylvania Department of Transportation – 6/08

409. A Report on Motorcyclist Injuries and Fatalities Since the 2003 Repeal of the Mandatory Helmet Law – 6/08

410. State Efforts to Fund Assisted Living Services – 6/08

411. Agricultural Conservation Easement Purchase Program – 11/08

412. An Examination of State Agency Use of Electronic Fingerprinting to Process Noncriminal Justice Background Checks – 11/08

413. Building Permit Fee Collection and Expenditures – 11/08

414. Chesapeake Bay Tributary Strategy Compliance Cost Study – 11/08

415. Cell Phone Service in Pennsylvania – 11/08

416. Improving the Safety and Security of Freight and Passenger Rail in Pennsylvania – 11/08

2009

- 417. 2008 Annual Report to the General Assembly – 1/09
- 418. Tax-Exempt Property and Municipal Fiscal Status – 4/09
- 419. An Assessment of the Impact of Slots Gaming on Pennsylvania Lottery Sales (2009 Update) – 4/09
- 420. PA Game Commission Compliance With Its Strategic Plan – 4/09
- 421. Summary of the Financial and Academic Status of the Duquesne City School District – 4/09
- 422. PA Film Production Tax Credit and Industry Analysis – 6/09
- 423. An Evaluation of the Keystone Opportunity Zone (KOZ) Program – 7/09
- 424. Preliminary Report on Pennsylvania’s Educational Improvement Tax Credit Program – 7/09
- 425. Preliminary Report on Pennsylvania’s Research and Development Tax Credit Program – 7/09
- 426. Afterschool Programs in Pennsylvania – 7/09

2010

- 427. 2009 Annual Report to the General Assembly – 1/10
- 428. Statewide Complement Levels of Probation and Parole Officers – 2/10
- 429. Examination of Current and Future Costs and Revenues From Forest Products and Oil, Gas, and Mineral Extraction on Pennsylvania Game Commission Lands – 2/10
- 430. The Deer Management Program of the Pennsylvania Game Commission – 2/10
- 431. A Review of the Commonwealth’s Growing Greener II Initiative – 3/10
- 432. The Feasibility of Establishing a Statewide Blighted Property Registry – 3/10
- 433. The Impact of Slots Gaming on the Pennsylvania State Lottery – 3/10
- 434. A Performance Audit of the Pennsylvania Fish and Boat Commission – 9/10
- 435. Pennsylvania’s System for Property Valuation and Reassessment – 9/10

- 436. Pennsylvania's Tax Credit Programs – 9/10
- 437. Fiscal Impact of Preferential Assessment of Farm and Forest Land (Clean and Green Program) – 9/10

2011

- 438. 2010 Annual Report to the General Assembly – 1/11
- 439. A Performance Audit of Pennsylvania's Medical Assistance Transportation Program for Methadone Maintenance – 2/11
- 440. Cost and Funding Models of a State-led Virtual Learning Program – 2/11
- 441. The Impact of Slots Gaming on the Pennsylvania State Lottery – 4/11
- 442. A Performance Audit of Pennsylvania's Access to Justice Act – 5/11
- 443. Adequacy of Fees Charged in Pennsylvania's Instant Check System for Firearm Purchases – 5/11
- 444. Pennsylvania's Current Real Property Tax Collection System – 6/11
- 445. Summary of the Financial and Academic Status of the Duquesne City School District – 6/11
- 446. An Inventory of State-owned Real Property and Subsurface Mineral Rights – 10/11
- 447. Volunteer Fire Company and Volunteer Ambulance Service Grant Program – 10/11
- 448. Economic Contributions of Sunday Hunting Alternatives in Pennsylvania: 2010 Update – 10/11
- 449. The Need for Public Community College Programs in Rural Pennsylvania - 12/11

2012

- 450. 2011 Annual Report to the General Assembly – 1/12
- 451. PA Lottery Funding of Programs and Services for Older Pennsylvanians – 2/12
- 452. Pennsylvania Game Commission Compliance With Its Strategic Plan – 2/12
- 453. Pennsylvania's 911 Emergency Telephone System: Funding, Expenditures, and Future Challenges and Opportunities – 5/12
- 454. Memo Report – Impact of Slots Gaming on the Pennsylvania State Lottery – 5/12
- 455. Summary of the Financial and Academic Status of the Duquesne City School District – 5/12

- 456. The Administration of Pennsylvania's LIHEAP Grant and Crisis Program – 6/12
- 457. Mandate Relief for County Human Services Programs – 6/12
- 458. Museum Funding in Pennsylvania – 11/12
- 459. The Feasibility of Using Biometric Smart Cards or Photo ID Cards to Dispense Public Assistance Benefits – 11/12
- 460. The Costs and Benefits of FSC Certification of DCNR Forests – 11/12
- 461. 2012 Pennsylvania Recreational Water Trails Economic Impact Study – 11/12
- 462. Interim Report on Pennsylvania's Continuing Professional Education Program – 11/12

2013

- 463. 2012 Annual Report to the General Assembly – 1/13
- 464. A Cost Effective Alternative Approach to Meeting Pennsylvania's Chesapeake Bay Nutrient Reduction Targets – 1/13
- 465. Study of the Economic Impact of the Brewery Industry in the Commonwealth – 1/13
- 466. Pennsylvania's Continuing Education Program for Professional Educators – 4/13
- 467. Financial and Compensation Information Concerning Nonprofit and For-profit Human Service Providers – 4/13
- 468. The Impact of Slots Gaming on the Pennsylvania State Lottery – 4/13
- 469. Pennsylvania Health Care Cost Containment Performance Evaluation – 10/13
- 470. A Performance Audit of the Pennsylvania Fish and Boat Commission – 10/13
- 471. A Performance Audit of the Emergency Medical Services Operating Fund – 10/13
- 472. The Status of Special Education for Gifted Students in the Commonwealth – 12/13
- 473. 2013 Annual Report to the General Assembly – 1/14

2014

- 474. Philadelphia's Use of Gaming Funds – 3/14
- 475. Impact of Slots Gaming on the Pennsylvania State Lottery – 3/14
- 476. An Update on the Feasibility of a Combined Fish and Wildlife Commission for Pennsylvania – 3/14
- 477. The Current Condition and Future Viability of Casino Gaming in Pennsylvania – 5/14
- 478. Prescription Drug Specialty Tiers in Pennsylvania – 9/14
- 479. Police Consolidation in Pennsylvania – 9/14
- 480. Character Education in Pennsylvania Public Schools – 9/14

2015

- 481. Pennsylvania Department of Transportation – 2/15
- 482. Dental Services for Persons With Disabilities in Pennsylvania – 2/15
- 483. Funding of County Adult Probation Services – 2/15
- 484. Impact of Slots Gaming on the Pennsylvania Lottery – 2/15
- 485. 2014 Annual Report to the General Assembly – 1/15
- 486. The Impact of Act 2012-207 on Access to Retail Pharmacies and Cost of Prescription Medications – 4/15
- 487. The Feasibility of Alternative Charter School Authorizers in Pennsylvania – 4/15
- 488. The Commonwealth's Network of Elder Abuse Task Forces – 6/15
- 489. PA Game Commission Compliance With Its Strategic Plan – 6/15
- 490. Family Caregivers in PA's Home and Community-Based Waiver Programs – 6/15
- 491. Department of Human Services' Implementation of the Olmstead Decision as It Pertains to State Centers – 9/15
- 492. The Adequacy of Fees Charged in Pennsylvania's Instant Check System for Firearms Purchases – 9/15

- 493. Feasibility and Cost Effectiveness Study: Merging Commonwealth of Pennsylvania Public School District Health Care Plans – 12/15
- 494. Study of Family Work Support Programs – 12/15
- 495. Implementation of the Pennsylvania Safety in Youth Sports Act – 12/15

2016

- 496. 2015 Annual Report to the General Assembly – 1/16
- 497. Pennsylvania’s Current and Future Need for Long-term Care Services for Veterans – 5/16
- 498. The Impact of Tavern Gaming on the Pennsylvania State Lottery - 5/16
- 499. A Performance Audit of the Pennsylvania Fish and Boat Commission- 6/16
- 500. Afterschool Programs in Pennsylvania – 6/16
- 501. PA eHealth Partnership Authority Evaluation - 10/16
- 502. Cost Estimates to Implement the Recommendations of the Task Force on Lyme Diseases and Related Tick-bone Diseases – 10/16
- 503. The Impact of Act 32 on the Collection of Local Earned Income Taxes - 10/16

2017

- 504. 2016 Annual Report to the General Assembly – 1/17
- 505. A Performance Audit of Pennsylvania’s Access to Justice Act – 2/17
- 506. PA Department of Corrections Overtime Study – 2/17
- 507. PA State Police Cost to Provide Safety on Public Highways – 3/17
- 508. Grant Expenditures by Commonwealth Agencies – 3/17
- 509. Public Charter School Fiscal Impact on School Districts – 5/17
- 510. Commonwealth Board and Commission Member Compensation and Expenses (Partial Report) – 5/17
- 511. The Impact of Tavern Gaming on the Pennsylvania State Lottery – 5/17
- 512. PA’s Program for Beneficial Use of Biosolids (Sewage Sludge) by Land Application – 6/17

- 513. A Review of the PA One Call System – 10/17
- 514. An Assessment of Fees Charged by PA County Recorders of Deeds – 10/17

2018

- 515. Annual Report to the General Assembly – 1/18
- 516. Sexual Assault Evidence Collection – 2/18
- 517. Costs to Implement the Right-to-Know Law – 2/18
- 518. Update of Cost Estimates for an Alternative Approach to Meeting PA’s Chesapeake Bay Nutrient Reduction Targets – 2/18
- 519. Promoting the Long-Term Sustainability and Viability of Universities in the PA State System of Higher Education – 4/18
- 520. Feasibility of Establishing a Water Use Fee in Pennsylvania – 6/18
- 521. An Interim Report on the Establishment of the Northern Pennsylvania Regional College – 6/18
- 522. PA Game Commission Compliance With Its Strategic Plan – 6/18
- 523. The Impact of Tavern Gaming on the Pennsylvania State Lottery – 6/18
- 524. A Fiscal and Operational Review of the YDC/YFC System – 10/18

2019

- 525. Annual Report to the General Assembly – 1/19
- 526. A Performance Audit of the PA Fish and Boat Commission – 3/19
- 527. The Impact of Tavern Gaming on the Pennsylvania State Lottery – 3/19
- 528. A Performance Evaluation of the Department of Environmental Protection Chapter 102 & Chapter 105 Permitting Programs – 6/19
- 529. Standardized Tests in Public Education – 6/19
- 530. A Study of Pennsylvania’s Dairy Industry – 9/19